



St Catherines Court, London, W4 1UH

Guide Price £500,000

**WHITMAN & CO.**

SALES · LETTINGS · COMMERCIAL

- Light and spacious top floor apartment
- West facing reception room
- Communal gardens
- Sought after location
- Two/three bedrooms
- No onward chain

Tenure - Leasehold with share of freehold  
 Lease Length - 982 Years remaining  
 Ground rent - Peppercorn  
 Service Charge inc. Reserve Fund - £5850 pa  
 Local Authority - Ealing  
 Council Tax - Band E

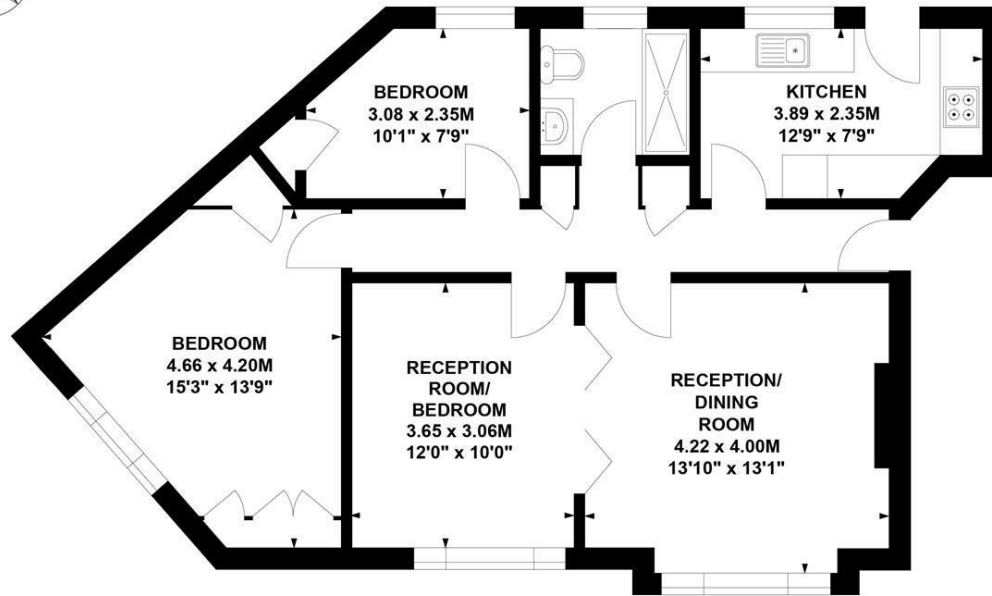
## THE PROPERTY

A light and spacious top floor two/three bedroom apartment situated in this exceptionally popular residential road in the heart of the Bedford Park Conservation area within a short walk of both Turnham Green station and Chiswick High Road. The accommodation provides a spacious west-facing reception room, an interconnecting second reception room/bedroom three, a recently fitted kitchen, two bedrooms with fitted wardrobes, a bathroom, an entrance hallway, heating and hot water included in the service charge and a large communal garden. The flat is located on the corner of Bedford Road and Newton Grove, a premier position in the Bedford Park area, within a short walk of Turnham Green station, local parks and the extensive shopping, cafe and restaurant facilities on Chiswick High Road and Turnham Green Terrace. No onward chain.

## St. Catherines Court, W4

Approximate Gross Internal Area  
 73 sq m / 786 sq ft

Key :  
 CH - Ceiling Height



### Second Floor

Not to scale, for guidance only and must not be relied upon as a statement of fact.  
 All measurements and areas are approximate only

## SITUATION



5-7 Turnham Green Terrace, Chiswick, London, W4 1RG

Tel 020 8747 8800

E-mail [sales@whitmanandco.com](mailto:sales@whitmanandco.com)

Website [www.whitmanandco.com](http://www.whitmanandco.com)

